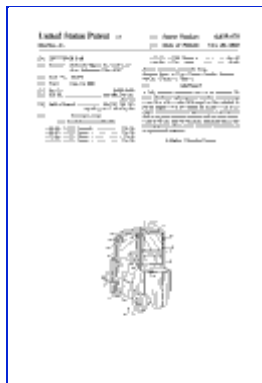


[About this patent](#)[Read this patent](#)

Lift truck cab

Robert P. Martin et al

[Read this patent](#)[Download PDF](#)[View patent at USPTO](#)[Abstract](#) | [Drawing](#) | [Description](#) | [Claims](#)

Abstract

A fully enclosed protective cab for an industrial lift truck affording a high degree of visibility and including a rear face with a retractable panel section adapted to permit engine cover movement for access to the truck engine. The retractable rear panel section is arranged to slide in its plane between extended and retracted operational positions, thereby taking up minimum space, and is transparent to afford a clear rearward view in both of its operational positions.

Patent number: 4619479**Filing date:** Mar 14, 1985**Issue date:** Oct 28, 1986**Inventors:** Robert P. Martin, Jr.

U.S. Classification

[296/190](#); [296/102](#); [296/146](#)

International Classification

B62D 3306

Claims

What is claimed is:

1. In combination, an industrial lift truck and a cab on the truck, the truck including a frame, an engine mounted on the frame, and components in the cab mounted on the frame, the cab comprising a roof structure for protecting the operator from falling objects, weather, airborne pollution, and the like, four generally upright corner members supporting the roof adjacent their upper ends and for attachment to the truck at their lower ends, a pair of said corner members being disposed adjacent the left and right front of the cab and another pair of said upright corner members being generally disposed adjacent the left and right rear of the cab, a transparent windshield supported on the front pair of upright corner members, left and right side walls supported on left and right ones of said upright corner members, respectively, a rear wall supported on the rear pair of corner members, the rear wall including an upper transparent panel and a lower panel, the lower panel being movably mounted relative to the upper panel between extended and retracted positions, guide means supported on said rear corner members for guiding said lower panel for movement between said extended and retracted positions, the retracted position being generally elevated relative to the extended position, said lower panel in its extended position cooperating with the upper panel to close off the zone between the rear pair of corner members and thereby exclude environmental intrusion, said components of the truck being movably mounted in the cab for access to the motor, said lower panel in its retracted position permitting said components of the truck to pass through the space of its extended position, and means on said cab for releasably holding said lower panel in its retracted position.

2. The combination as set forth in claim 1, wherein said upper and lower rear wall panels are substantially planar.

3. The combination as set forth in claim 2, wherein said lower panel in its extended position is in a plane generally parallel to the plane of the upper panel.

4. The combination as set forth in claim 3, wherein said lower panel in its retracted position is in generally the same plane as it occupies in its extended position.

5. The combination as set forth in claim 4, wherein said guiding means guides said lower panel for translatory movement in its plane.

6. In combination, an industrial lift truck including a frame, an engine mounted on the frame, an engine cover unit overlying the engine and pivotally supported on the frame, an operator station adjacent the engine cover, a cab for protecting the operator from falling

Search within this patent

Citations

Patent Number	Title	Issue date
3866969	(unknown)	Feb 1975
4009901	Disconnect and storage means for a windshield wiper arm assembly	Mar 1, 1977
4079985	Cab for industrial truck	Mar 21, 1978
4133574	Guard-cab for cold room	Jan 9, 1979
4221274	Lift truck cab with	Sep 9, 1980

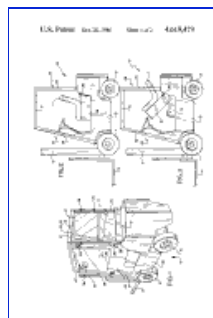
4464864	movable back wall portion Weatherstripping in a double-hung window	Aug 14, 1984
-------------------------	---	--------------

Referenced by

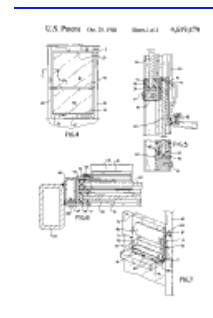
Patent Number	Title	Issue date
5282661	Collapsible driver's cab for a truck	Feb 1, 1994
5362118	Window assembly for cab of a vehicle	Nov 8, 1994
6530448	Restraint system	Mar 11, 2003
6561572	Cab enclosure construction	May 13, 2003
7427096	Window assembly for school bus	Sep 23, 2008

cover, a cab for protecting the operator from falling objects and adverse environmental conditions, the cab comprising a roof overlying the operator's station, a set of four generally upright corner members supporting the roof adjacent their upper ends and attached to the truck frame adjacent their lower ends, a pair of said corner members being disposed adjacent the left and right front of the cab and another pair of said corner members being disposed adjacent the left and right rear of the cab, left and right side walls supported on left and right ones of said corner members, respectively, a rear wall supported on the rear pair of corner members, the rear wall including upper and lower transparent panels extending between said rear corner members in generally parallel upright planes, the transparent panels each having top and bottom edges, the top edge of the upper panel being adjacent the roof, the lower panel lying in a plane forward of the plane of the upper panel, channel elements supported on each of said rear corner members, said channel elements being arranged to guide said lower panel for translatory motion between an extended position and a retracted position, said lower panel in said extended position having its bottom edge substantially below the bottom edge of the upper panel and in said retracted position having its bottom edge adjacent the bottom edge of the upper panel, means to releasably hold said lower panel in its retracted position, the lower panel in its extended position lying in the path of an element on the engine cover when it is moved for access to the engine and providing clearance for such cover movement in its retracted position.

Drawings



[Page 2](#)



[Page 3](#)